

Z1 2023+ NISSAN Z RIGHT SIDE SINGLE EXIT EXHAUST INSTALLATION MANUAL



This Installation Manual is intended for the following models:

2023+

Nissan Z

PROLOGUE:

Study these instructions completely before proceeding to assembly. The installer must have a thorough knowledge of automotive systems operation. If unfamiliar with any of the concepts outlined in this instruction, we recommend the installation be completed by a qualified professional.

WARNING!

Extreme caution should be taken when performing maintenance or performance upgrades to your vehicle. Please observe and abide by any Warning or Caution labels placed on the various components and tools used when servicing your vehicle. If you have any questions regarding installation or the various components included with the Z1 Motorsports 2023+ Nissan Z Right Side Single Exit Exhaust, consult with a Professional Mechanic or contact Z1 Motorsports for more information.

PARTS INCLUDED:

Item	Quantity	Description
1	1	Z1 Muffler
2	1	Mid Pipe
3	1	Rear Pipe
4	1	Exhaust Clamp
5	1	Muffler Hanger

TOOLS REQUIRED:

- Hydraulic Jack
- (2) 2-Ton (or greater) Jack Stands
- Ratchet
- Ratchet Extension(s)
- 14mm Socket/Wrench
- 15mm Socket/Wrench
- Snips

SAFETY REQUIREMENTS:

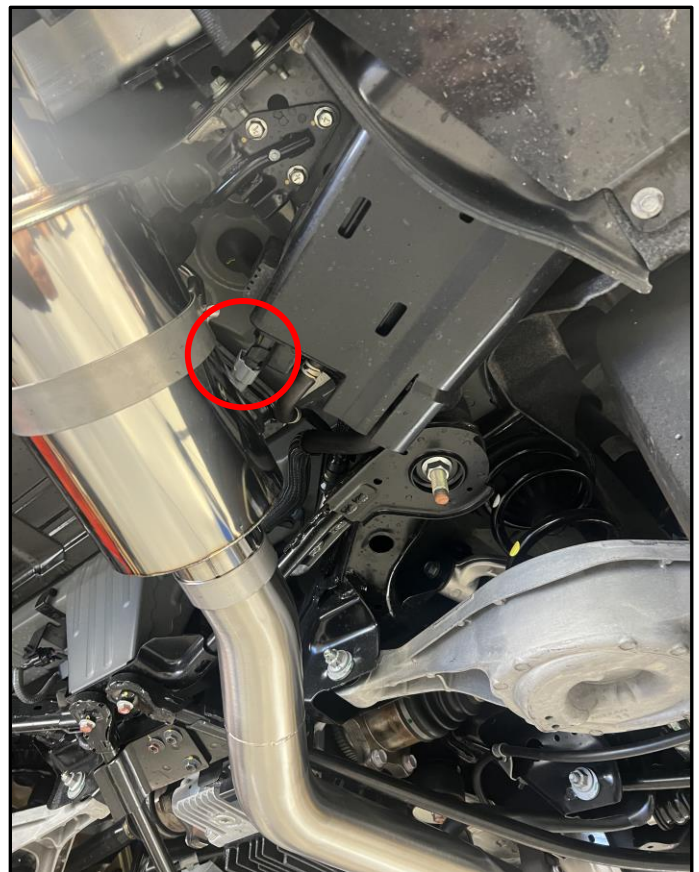
- Always wear safety glasses and any necessary protective garments. If using any fluids, chemicals, or solvents, a respirator is recommended.
- Always turn the ignition to the OFF position and disconnect the NEGATIVE battery terminal.
- Always use properly rated jack stands when working under your vehicle.
- Always keep limbs and parts away from moving drivetrain parts.
- Only operate drivetrain in safe space and well-ventilated areas.

BEFORE YOU BEGIN:

Remove contents from the Z1 Motorsports 2023+ Nissan Z Right Side Single Exit Exhaust and verify that ALL necessary hardware is present.

PROCEDURE:

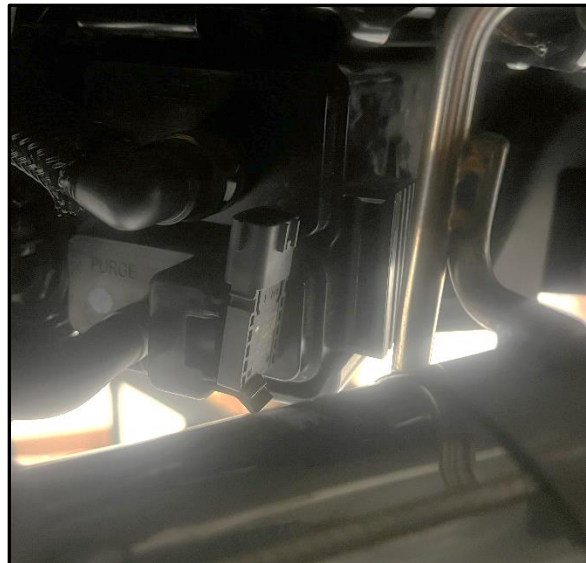
1. Place the transmission in Park position (or in Reverse gear if equipped with a manual transmission). Apply the parking brake.
2. Locate proper jacking points on vehicle's chassis (refer to vehicle's Owner Manual). Raise and support vehicle using jack & jack stands.
3. Remove old exhaust components. It is recommended to spray some rust penetrating fluid on the old exhaust fasteners ~30 minutes before removal. After removal set to the side in the same orientation as removed.
4. There is an electrical connector at the rear of the car connecting to a sensor on the EVAP canister that needs to be rotated to prevent contact with the Z1 muffler (shown at right).



5. Disconnect the connector from the sensor.
6. Unclip and remove the sensor from the EVAP canister.
7. Using snips or another cutting tool, cut the upper clip that secures the sensor in place (as shown below).



8. Rotate the sensor 90°, so that the connector is facing up, and reinstall into the EVAP canister. The bottom clip on the canister will still be utilized to hold the sensor in place (as shown below).

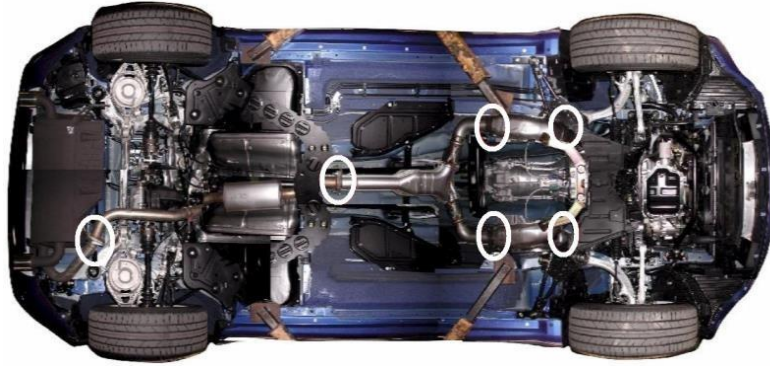


9. Reconnect the electrical connector to the sensor in the EVAP canister.

Note: For extra protection, you can cover the wires coming out of the electrical connector in electrical tape, wiring loom, or other form of heat shield. You can also zip-tie the sensor to the canister, but in our testing this was not necessary.

10. Locate new exhaust components and hardware/gaskets.
11. Position new exhaust components into location under vehicle. Place bolts through flange mounting holes and loosely secure with hex nuts.

Note: Be sure to include gaskets between each exhaust flange connection. (Use diagram below as reference for exhaust flange locations.)



12. Once all components are in place and loosely secure, tighten bolts and nuts starting at the front of the vehicle, working towards the rear.
13. Assure all nuts are tight and torqued to 40ft-lbs.
14. If applicable, position exhaust tail pipes and tips over muffler(s) with supplied clamps. Make sure the exhaust clamps don't get caught up on one of the expansion joints as shown in the picture at right.
15. Tighten the clamps on the tailpipes and tips. They take a lot of tightening to fully close to prevent movement. After initial tightening, try to rotate or wiggle the tailpipe/tip, if there is any movement tighten them some more.
16. Properly lower vehicle from jack stands.
17. Start vehicle. While at idle, check for leaks or faulty operation of exhaust components.
18. Perform a final test drive of vehicle.



END

Additional Technical Support:
Contact Z1 Motorsports at info@z1motorsports.com
Or call 770-838-7777 between 9am and 6pm ET