



PART NUMBER(S) REQUIRED FOR INSTALLATION:	999Y5 W8010 Bed Assist Grip

999Y5 W8010 Bed Assist Grip

KIT CONTENTS:

[illegible]

TOOLS REQUIRED:

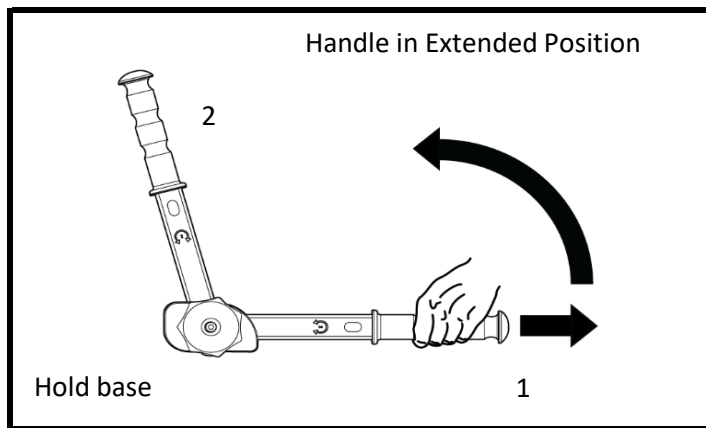
INSTALLATION CAUTIONS:



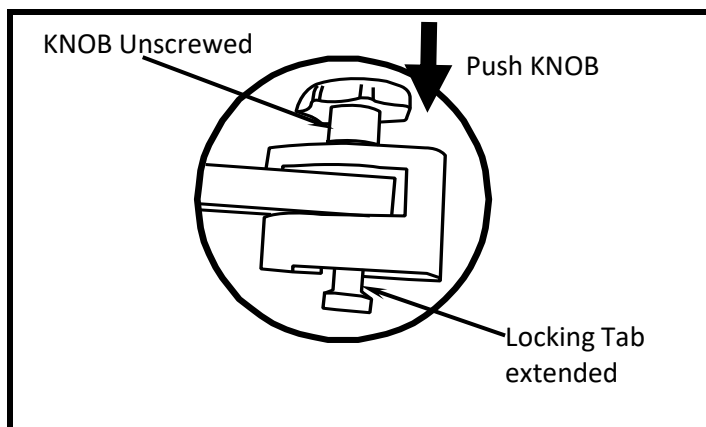
CAUTION

- Dealer installation recommended. Instructions may refer to Service Manual.
- Please read this instruction carefully before installing this product for correct installation.
- Please DO NOT use or install the part in ways other than what is described.

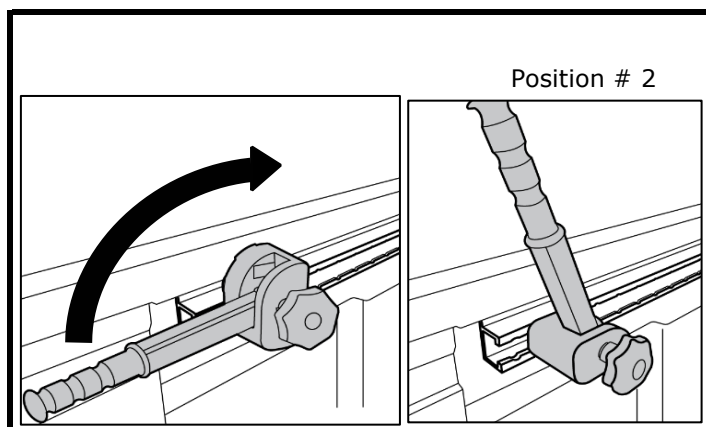
SECTION 2 - VEHICLE PREPARATION



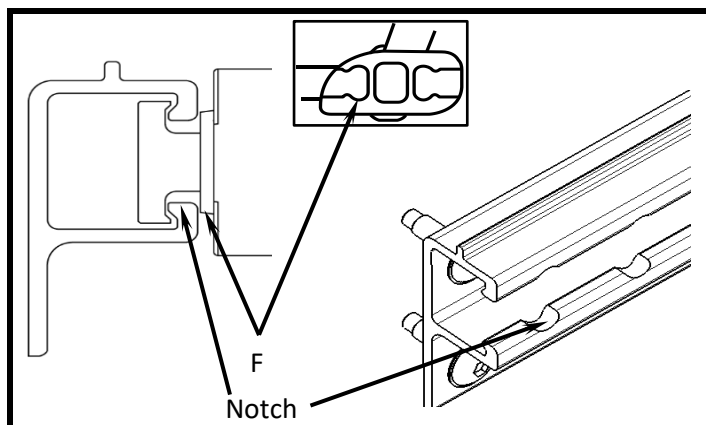
- 2.1) Prepare Handle to install on DS (Drivers Side) truck bed utility track
- Open tailgate
 - Place handle in extended up position hold base (pull handle forward from base (Position # 1) and rotate upwards (Position # 2), allow handle to drop in locked position.



- 2.2) Prepare base to attach to utility track
- Unscrew knob on right side till it stops and push knob toward body
 - Check that the Locking tab is extended.

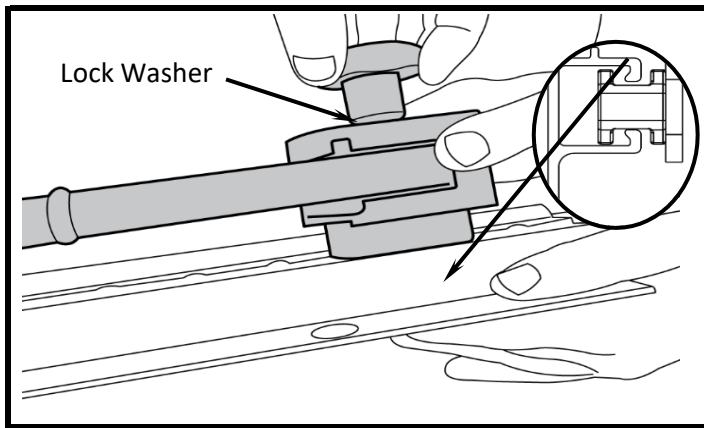


- 2.3) Position on Utility Track
- Open tailgate
 - Insert handle body into utility track with handle pointed to rear of vehicle (toward the tailgate).
 - Rotate handle body 90 degrees upward so the handle is in deployed position # 2 and hold in position.



- 2.4) Lock base into place on the utility track
- Hold handle body so the locating tabs (F) lock into the utility track notches.
 - Tighten handle retaining knob while holding the handle assembly in position # 2. See 2.5

SECTION 2 - VEHICLE PREPARATION



2.5) Lock Body into Utility Track

- a) Hold tab into the notches in utility track and tighten knob to lock into the track.
- b) Tighten knob until lock washer is flattened against body
- c) Cycle handle by pulling up and moving the handle toward cab, letting the handle move rearward to lock.
Let handle spring pull handle into locking position.
- d) Reverse operation to deploy handle for use.



CAUTION

- **MAXIMUM Weight Limit is 300 LBS. (136 Kg.)**

- **Handle knob should be checked periodically and kept tightened.**

- **Do not Use handle as a tie down or hang anything from it on any position.**