



ELITE SCANNER TOOL

Menu Overview

Tab 1: OBDII

This tab acts as your standard OBD-II scanner.

Note: We recommend using Autoscan in most cases.

SELECTION

- Autoscan
 - ▶ System Status
 - ▶ Read Codes
 - ▶ Erase Codes
 - ▶ Live Data
 - ▶ Freeze Frame
 - ▶ I/M Readiness
 - ▶ On-Board Monitor Test
 - ▶ Component Test
 - ▶ Vehicle info
 - ▶ Modules Present
 - ▶ DTC Lookup
- Select Protocol

FUNCTION

Automatically determines the OBD-II protocol to use for your ECM
Overview page
Reads Diagnostic Trouble Codes
Clears Diagnostic Trouble Codes
Monitor live engine parameters
Snapshot of data at time of last DTC
Monitors for emissions testing readiness
Drive Cycle monitoring (misfires, VVT, etc.)
Not currently supported
General ECM info and counters
Lists the available engine modules
Manually search DTC Database
Allows manual selection of the OBD-II Protocol (Advanced)

Tab 2: Nissan

This tab connects you to the rest of the vehicle modules.

Note: We recommend using SmartVIN, which saves time by scanning just the modules that your vehicle has.

SELECTION

- Nissan/Infiniti
 - ▶ SmartVIN
 - ▶ Select Control Module

 - ▶ Manual Selection
 - Quick Scan
 - Report
 - Save
 - Control Module
 - [Choose Module/Category]
 - ↳ ECU Information
 - ↳ Read Codes
 - ↳ Clear Codes
 - ↳ Live Data
 - ↳ Active Test
 - ↳ Special Functions
 - ↳ CAN Diag Support Mntr

 - NATS

FUNCTION

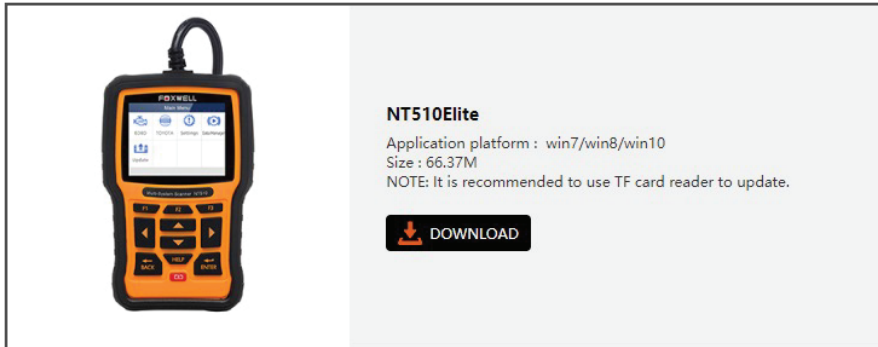
Choose the vehicle type (only used with Manual Selection)
The scanner will read your VIN to automatically filter vehicle modules
These are unfiltered results, so many of the modules will not apply to your specific vehicle
Manually filter vehicle modules by Destination, Country, Model, Year
Scans all vehicle modules for diagnostic information
View a report of trouble codes from all control modules
Saves the Quick Scan Report for future reference

Select the module that you would like to interact with (Vehicle Dependent)
Information of the selected module
Reads codes of the selected module
Clears codes of the selected module
Monitor live parameters from the selected module
Activate and test individual module controls (CAC pump control, fan duty, ...)
Perform various module learning functions (Throttle relearn, coolant bypass, ...)
View the CAN link between the selected module and others on the system, useful for CAN diagnostic issues.
Contains information on the Nissan Antitheft System

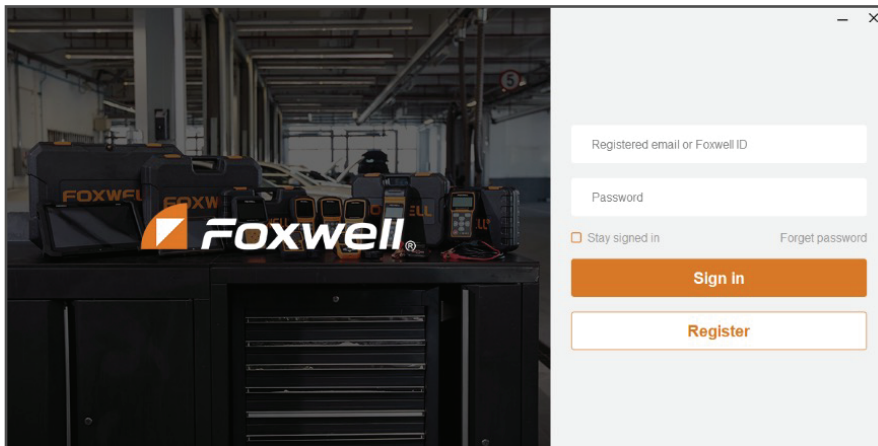
Software Update Instructions

1. DOWNLOAD AND INSTALL THE FOXASSIST SOFTWARE

- Go to <https://www.foxwelltech.us/support-tools.html>
- Scroll down to find the NT510Elite and click download



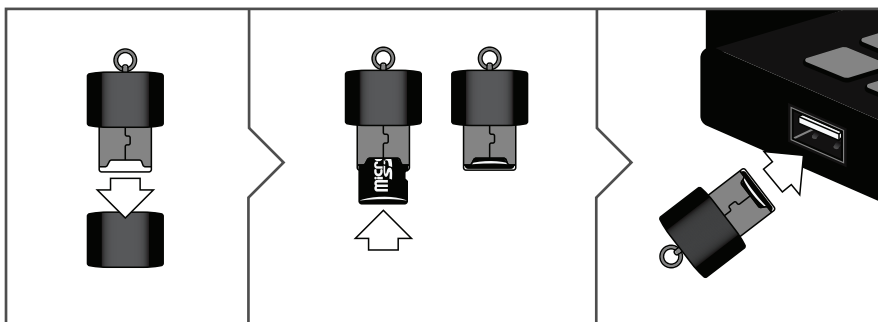
2. ONCE INSTALLED YOU WILL NEED TO LOGIN OR CREATE AN ACCOUNT



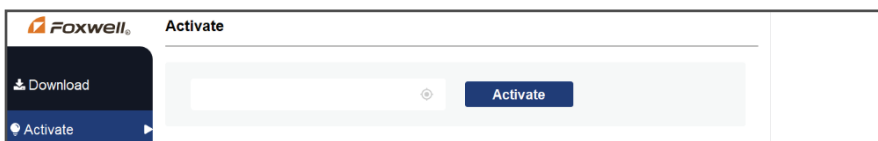
3. ONCE LOGGED IN, REMOVE THE SD CARD IN THE UPPER LEFT CORNER OF THE Z1 ELITE SCAN TOOL

4. LOCATE THE USB SD CARD READER SUPPLIED WITH YOUR SCAN TOOL

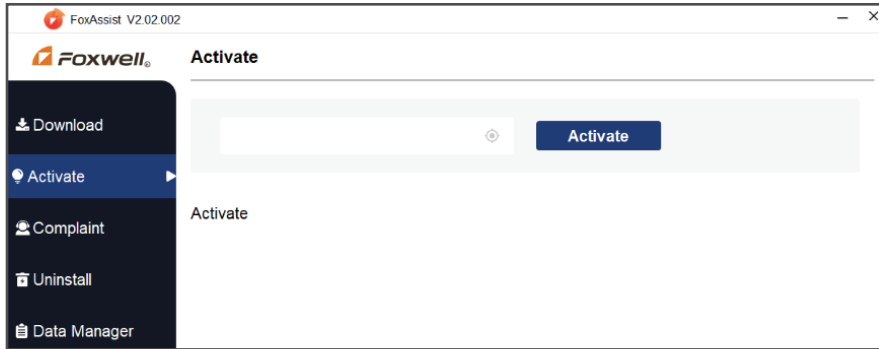
- Remove the cap from card reader
- Insert the SD card into the reader
- Plug the reader into your computer



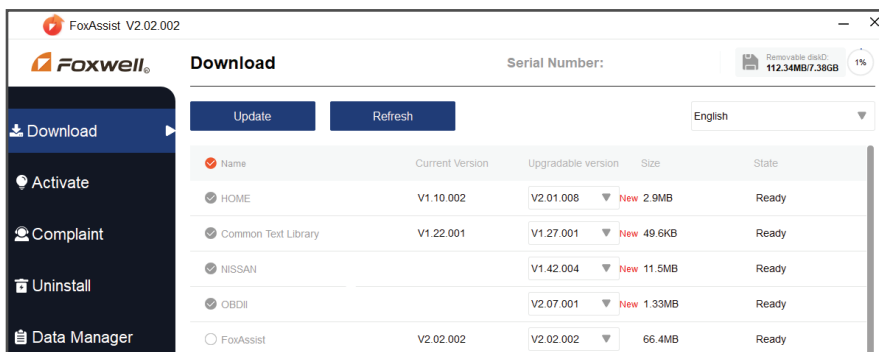
5. ONCE THE SD CARD READER IS PLUGGED IN, YOUR SERIAL NUMBER SHOULD APPEAR IN THE FIELD ON THE ACTIVATE TAB. CLICK 'ACTIVATE' TO REGISTER YOUR SCAN TOOL WITH YOUR FOXWELL ACCOUNT. IF THE SERIAL NUMBER DOES NOT AUTOMATICALLY POPULATE, ENSURE YOUR COMPUTER RECOGNIZES THE READER AND RESTART FOXASSIST.



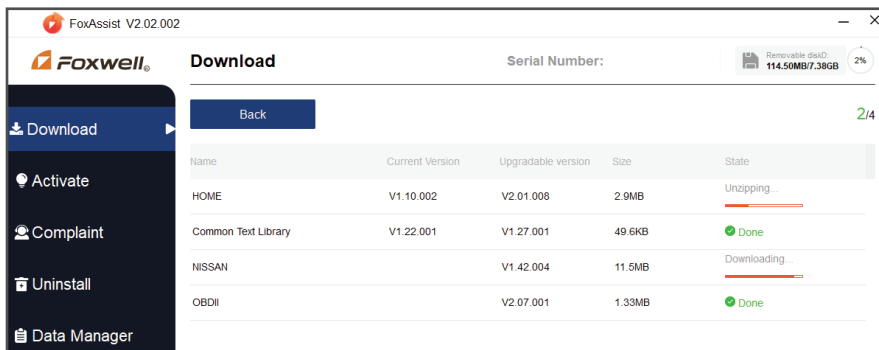
Software Update Instructions (Continued)



6. ONCE ACTIVATED, GO TO THE DOWNLOAD TAB. THIS WILL SHOW YOU THE CURRENT VERSION OF SOFTWARE ON YOUR DEVICE AND ANY UPGRADE OPTIONS. SELECT WHICH MODULES YOU WANT TO UPDATE THEN CLICK 'UPDATE'



7. ONCE COMPLETED A MESSAGE WILL APPEAR SAYING ALL SOFTWARE WAS DOWNLOADED AND INSTALLED



8. EJECT THE SD CARD FROM YOUR COMPUTER THEN REMOVE IT. PUT THE SD CARD BACK IN YOUR Z1 ELITE SCAN TOOL. BE CAREFUL WHEN INSTALLING THE SD CARD INTO THE SCAN TOOL AS YOU CAN ACCIDENTALLY INSERT THE CARD ON THE OUTSIDE OF THE SCAN TOOLS READER. AS SHOWN IN THE PICTURE, INSTALL THE CARD TO THE RIGHT OF THE VERTICAL METAL LINE SHOWN.

