



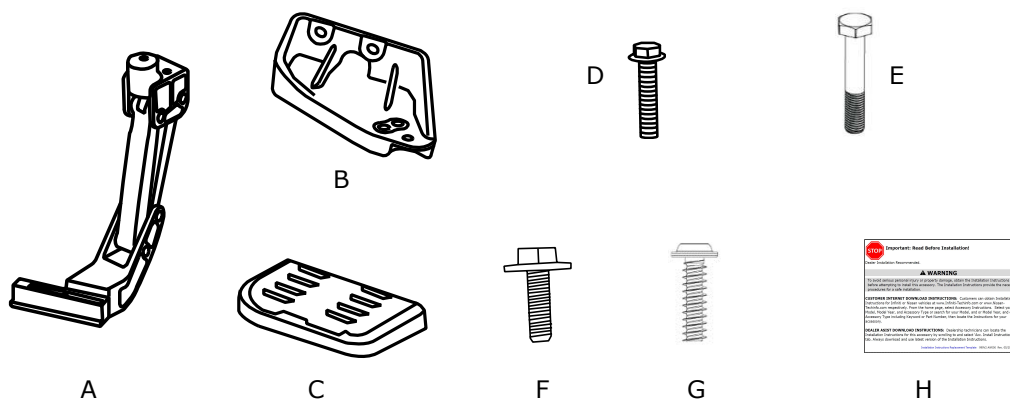
## GENUINE PARTS

### INSTALLATION INSTRUCTIONS

<b>DESCRIPTION:</b>	Rear Bumper Step Assist
<b>APPLICATION:</b>	Nissan Frontier
<b>PART NUMBER:</b>	T99T7 9BU10

#### KIT CONTENTS:

Item	Qty.	Part Description
A	1	Linkage Assembly
B	1	Assembly Mount
C	1	Step Pad
D	1	M8 Flange Bolt 81-46825
E	2	Bolt Hex 10mm x 65mm
F	2	Bolt M14 x 45 11298 EN00A
G	3	Delta PT Screw M5 x 20mm
H	1	Installation Instructions Replacement Template



#### TOOLS REQUIRED:

- Socket Wrench
- 3" Extension
- 19mm Socket (Short Socket)
- Torque Wrench
- 12mm Socket (Short Socket)
- 15mm Socket (Short Socket)
- 21mm Socket (Long Socket)

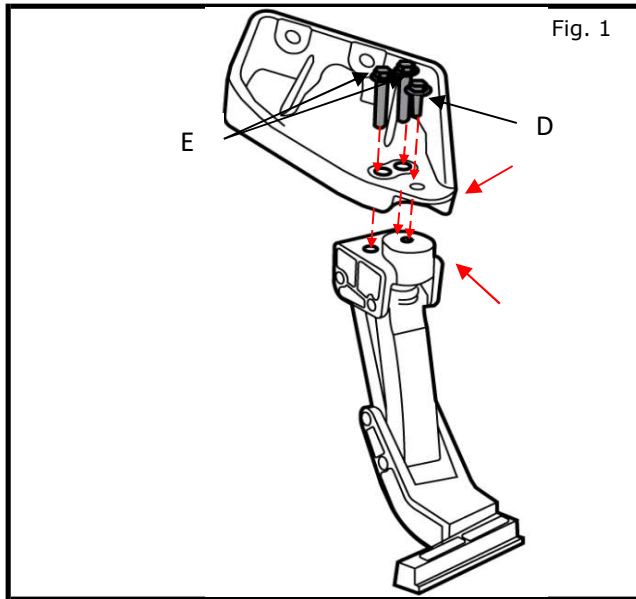
#### PRE-INSTALLATION WARNINGS, CAUTIONS, CRITICAL STEPS, and NOTES:

- Dealer Installation Recommended. Instructions may refer to Service Manual.

#### **⚠ WARNING**

- Be careful of sharp edges under vehicle.
- Bolts must be tightened to specified torque values.

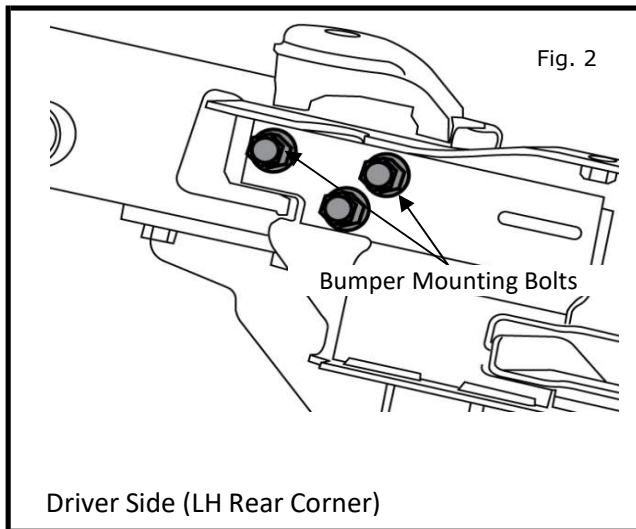
**INSTALLATION PROCEDURE:** (continue)



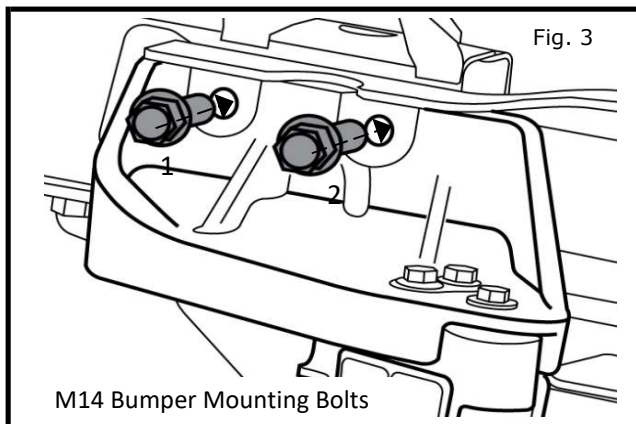
- 1) Raise and secure vehicle on lift.
- 2) Secure linkage assembly in vice at points indicated by arrows in Fig. 1.
- 3) Orient all parts as shown in Figure 1 and torque (2) hex bolts (E) to 44Nm-50Nm (33ft-lbs - 36.8ft-lbs) with 15mm socket.
- 4) Tighten hex bolt (D) to 16Nm-20Nm (11.8 - 14.75ft-lbs) using a 12mm socket as shown in Fig.1

**NOTE:**

**Keep step pad linkage assembly in closed or stowed position.**



- 5) Remove (2) Bumper Bracket to Frame mounting bolts with an 19mm socket as shown in Fig. 2.



- 6) Align holes in assembly mount to the Bumper mounting bolts as shown in Fig. 3. hand start M14 x 45 bolts (F) in to hole.

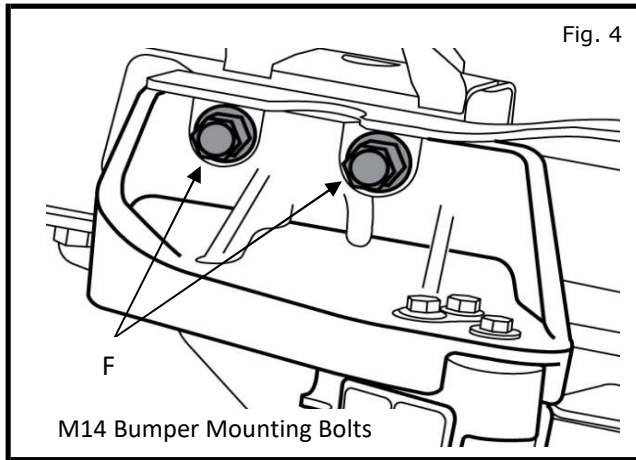
**Note:**

**To increase ease of assembly, fasten down Bolt 1 in position 1 first before Bolt in position 2.**

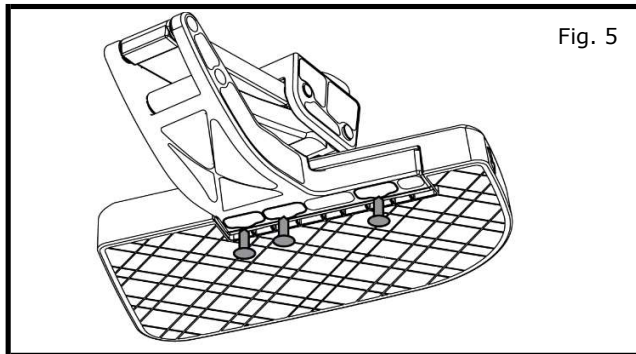
**NOTE:**

**Ensure bracket is installed in orientation shown in Figure 3.**

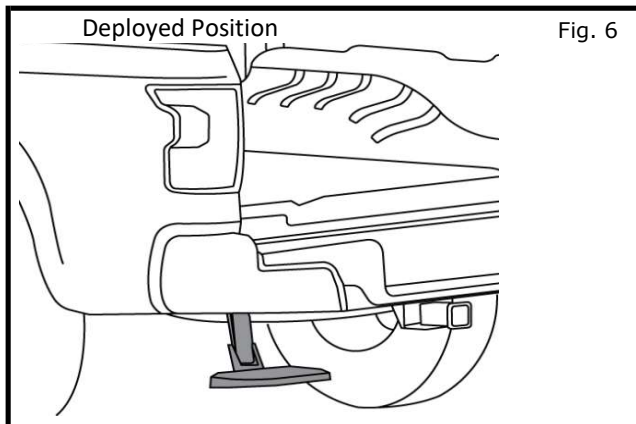
**INSTALLATION PROCEDURE:** (continued)



- 7) Use 21mm socket to tighten bolts (F) to mount assembly bracket to rear bumper bracket and frame.  
Torque bolts (F) to 150Nm-160Nm (110.6 to 118 ft-lbs)



- 8) Mount step pad to linkage assembly as shown in Fig. 5.
- a) Push linkage assembly into lowered position.
  - b) Insert PT screws into step pad.
  - c) Locate step pad into lower mount of linkage assembly.
- 9) Using T25 TORX head screw driver Install 3 pt screw into step pad and tighten to 6Nm (4.5 ft-lbs) as shown in Fig. 5



- 10) Lower vehicle from lift.

